

# MONTHLY MEMBERSHIP PROGRESS REPORT

District A 15

Results as of: 5/31/2024

GMT:

LOCATION ONTARIO

GMT CA

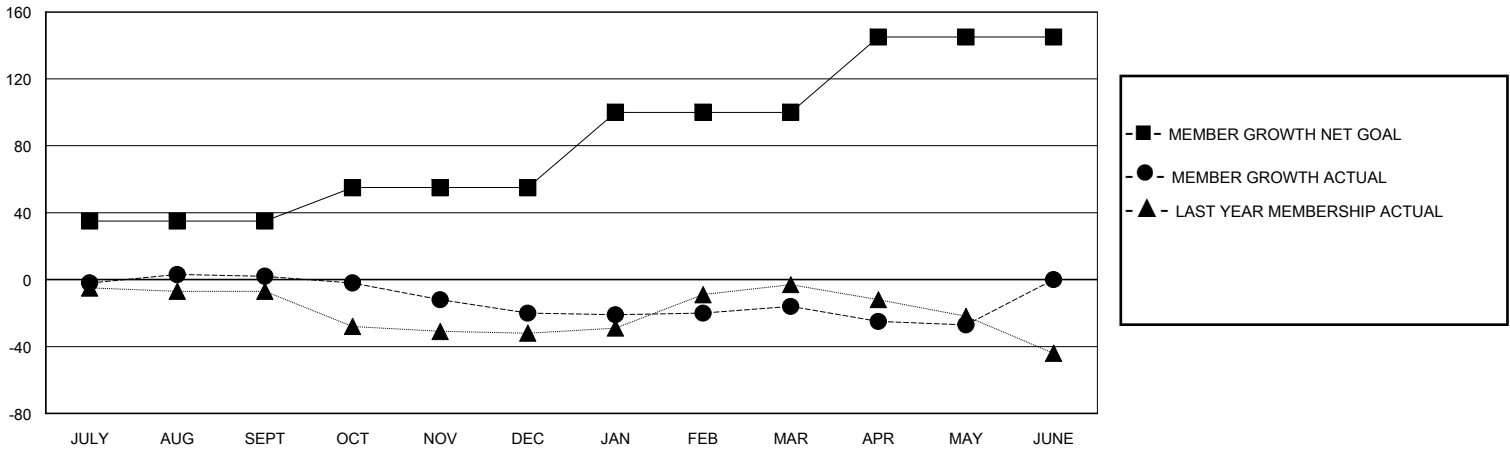
Clubs			
RESULTS FOR 2023-2024			
QUARTER	NEW CLUB GOAL	NEW CLUBS	DROPPED CLUBS
JULY/AUG/SEPT	0	0	0
OCT/NOV/DEC	1	0	0
JAN/FEB/MAR	0	0	0
APR/MAY/JUNE	0	0	0

Members			
RESULTS FOR 2023-2024			
QUARTER	MEMBER GROWTH NET GOAL	MEMBER GROWTH ACTUAL	DROPPED MEMBERS ACTUAL (including transfers)
JULY/AUG/SEPT	35	25	17
OCT/NOV/DEC	20	41	57
JAN/FEB/MAR	45	25	20
APR/MAY/JUNE	45	14	25

GOALS AND ACTUAL NEW CLUBS CUMULATIVE



GOALS AND ACTUAL MEMBERS CUMULATIVE



DROPPED CLUBS: 0	34 CLUBS OF 57 ADDED 1 OR MORE NEW MEMBERS	<u>GENDER DISTRIBUTION</u>	
<u>DROPPED MEMBERS</u>		MALE	933 (71.11%)
DECEASED	24	FEMALE	379 (28.89%)
CLUB CANCELLED	0	TOTAL FAMILY UNIT MEMBERS	
OTHER	95	174	
TOTAL	119	FAMILY MEMBERS PAYING HALF DUES	
		89	

[CLICK HERE FOR CUMULATIVE MEMBERSHIP DATA](#)